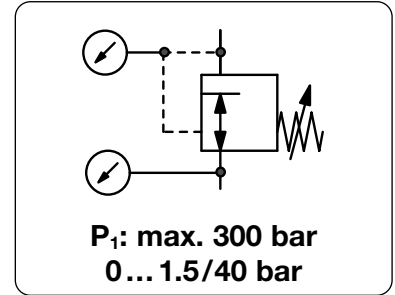


Description	High pressure regulator for gas cylinders for reducing pressure of compressed air or liquid gases from a high level to the required pressure.
Supply pressure	max. 300 bar
Media	compressed air, oxygen or different gases
Connections	according to DIN 477
Adjustment	by T-handle
Gauge port	All regulators are equipped with both one supply pressure gauge and one outlet pressure gauge.
Leakage rate	10 ⁻⁶ mbar l/s
Compensation	All regulators are equipped with supply pressure variation compensation, so that a change in supply pressure has no effect on the outlet pressure's stability.
Temperature range	-30 °C to 60 °C / -22 °F to 140 °F
Material	Body: brass O-rings: NBR/Buna-N and EPDM Spring cage: brass Diaphragm: 65NBR4550, PTFE for outlet > 10 bar, stainless steel for pure gases up to 5.0

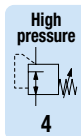


Dimensions			Version	Flow rate		Supply pressure	Pressure range	Order number
A	B	C	1-step	m ³ /h*2	l/min*2	max. bar	bar	
mm	mm	mm	2-step					

Cylinder pressure regulator 300 bar <small>for compressed air, connections DIN 477, with inlet / outlet gauges</small> RH300								
210	190	100	1-step	48	800	300	0 ... 10	RH301-00C
210	210	120		75	1250		0 ... 20	RH301-00D
				120	2000		0 ... 40	RH301-00E
240	190	100	2-step	8	133	300	0 ... 1,5	RH302-00A
				48	800		0 ... 10	RH302-00C

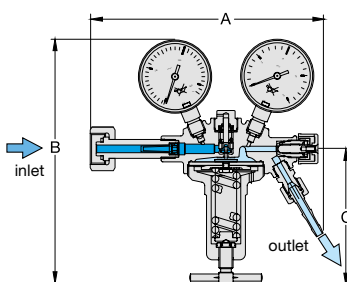


RH301, 1-step

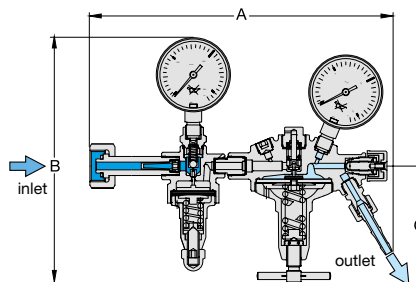


Special options, change the appropriate letter

compressed air	connection gauge G ⁵ / ₈	RH35 -...-
carbon dioxide	CO ₂	RH30 -...-03
inert gas		RH30 -...-04
argon	Ar	RH30 -...-05
fuel gas		RH30 -...-06
nitrogen	N ₂	RH30 -...-07
forming gas		up to 40 bar RH30 -...-08
helium	He	up to 40 bar RH30 -...-09
hydrogen	H ₂	RH30 -...-11
testing gas		up to 40 bar RH30 -...-12
oxygen	O ₂	up to 20 bar RH30 -...-15
chrome-plated body	inside and outside	1-step RH301 -C....
chrome-plated body	inside and outside	2-step RH302 -C....
metal diaphragm	5.0 purity	1-step RH301 - .M...
		2-step RH302 - .M...



cross-section, 1-step



cross-section, 2-step



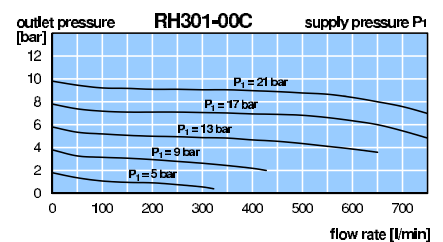
RH302, 2-step



RH301-C..., chrome-plated

connection thread up to 300 bar		
gas type	inlet *1	outlet
fuel gas	W30x2 LH	G ³ / ₄ LH
all others	W30x2	G ¹ / ₄

flow rate - correction factor	
gas type	factor
compressed air	1.00
oxygen O ₂	0.95
carbon dioxide CO ₂	0.81
hydrogen H ₂	3.80
argon Ar	0.85
helium He	2.70
propane C ₃ H ₈	0.80
nitrous oxide N ₂ O	0.80



*1 Thread according to DIN 477, only left hand thread is marked LH, right hand RH is not marked.
*2 at supply pressure of 2x outlet pressure + 1 bar